



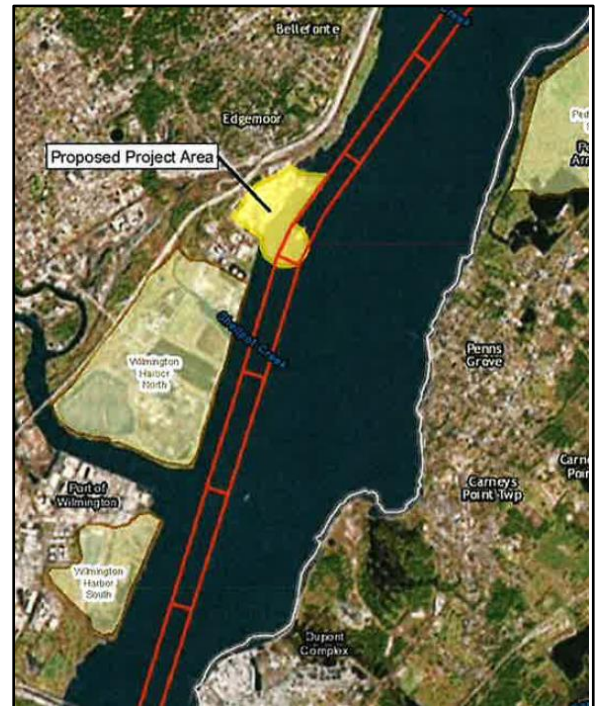
## ERDC Dredging Operations Technical Support Program (DOTS)

U.S. ARMY CORPS OF ENGINEERS

BUILDING STRONG®

### Response Summary:

ERDC is assisting the U.S. Army Corps of Engineers, Philadelphia District (CENAP) in analyzing the proposed development of a new container terminal at the Edgemoor Site in the Port of Wilmington, Delaware. This will be accomplished through a ship simulation study. The DOTS program allowed for ERDC personnel to conduct a reconnaissance trip to the Port of Wilmington to observe navigational conditions. The purpose of the reconnaissance trip is to collect site information and photographs needed to develop simulation databases. ERDC personnel rode a bulk carrier from the Benjamin Franklin Bridge to the Delaware Bridge to collect photographs. ERDC also met with representatives from CENAP, the Delaware River Pilots Association, and the Port of Wilmington to discuss ship handling and the current operations at the study area.



### Period of Performance:

The recon trip was conducted on 20 February 2018 – 23 February 2018.

### Benefits of the Response to the USACE Dredging/Navigation Program:

The ship simulation study will provide a tool to CENAP that can be used to assess the general feasibility of the proposed location of the container terminal. The results from this study will be in used in the developing the subsequent PED phase simulations.

### Deliverable:

Using information gained on the bulker transit (see above) and discussions with the stakeholders, ERDC personnel were able to provide CENAP recommendations regarding the necessity of ship simulation for the Edgemoor project. Also, ERDC was able to provide oversight to simulations performed at a third party simulator and to represent USACE and CENAP interests.



Providing environmental and engineering technical support to the U.S. Army Corps of Engineers Operations and Maintenance navigation and dredging missions



S. Keith Martin  
Coastal and Hydraulics Laboratory Name •  
Keith.Martin@erdc.dren.mil

DOTS ID: DOTS-18-R23