



ERDC Dredging Operations Technical Support Program (DOTS)

U.S. ARMY CORPS OF ENGINEERS

BUILDING STRONG®

Response Summary:

Researchers from ERDC's Coastal & Hydraulics Laboratory accompanied representatives from Little Rock District's Operations and Maintenance and Hydraulics and Hydrology groups on a site visit to Lake Dardanelle, on the Arkansas River to investigate sedimentation and shoaling issues affecting the navigation channel.

Period of Performance:

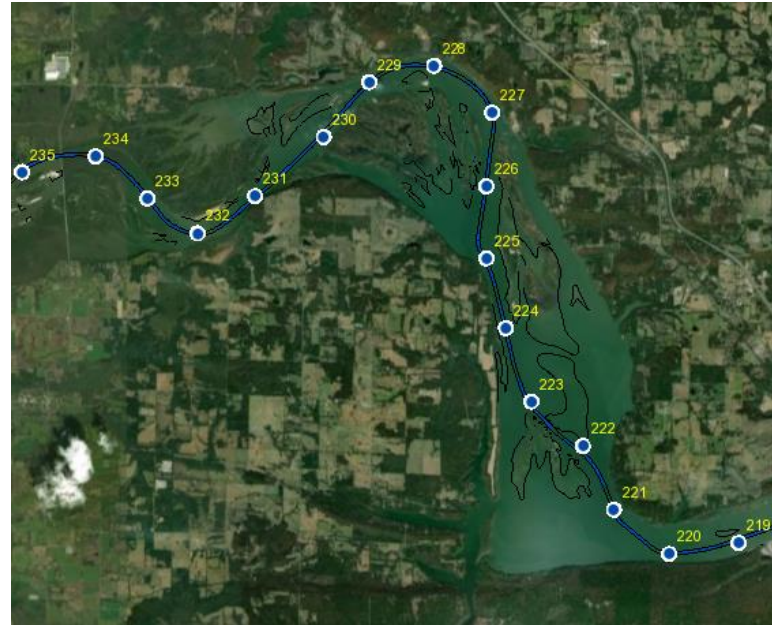
18-Apr-2018 to 1-May-2018

Benefits of the Response to the USACE Dredging/Navigation Program:

The site visit and related investigation helped to refine the understanding of the potential causes of the shoaling in the navigation channel. This is the first step in the design of more cost-effective structural solutions that can reduce dredging and costs in the Lake Dardanelle pool near River Mile 222.

Deliverable:

Findings and recommendations were documented in a Memorandum For Record that can be used as the Little Rock District formulates future operations and maintenance plans.



Providing environmental and engineering technical support to the U.S. Army Corps of Engineers Operations and Maintenance navigation and dredging missions

Travis A. Dahl

Coastal Hydraulic Laboratory – travis.d.dahl@usace.army.mil

DOTS ID: DOTS-18-R39