



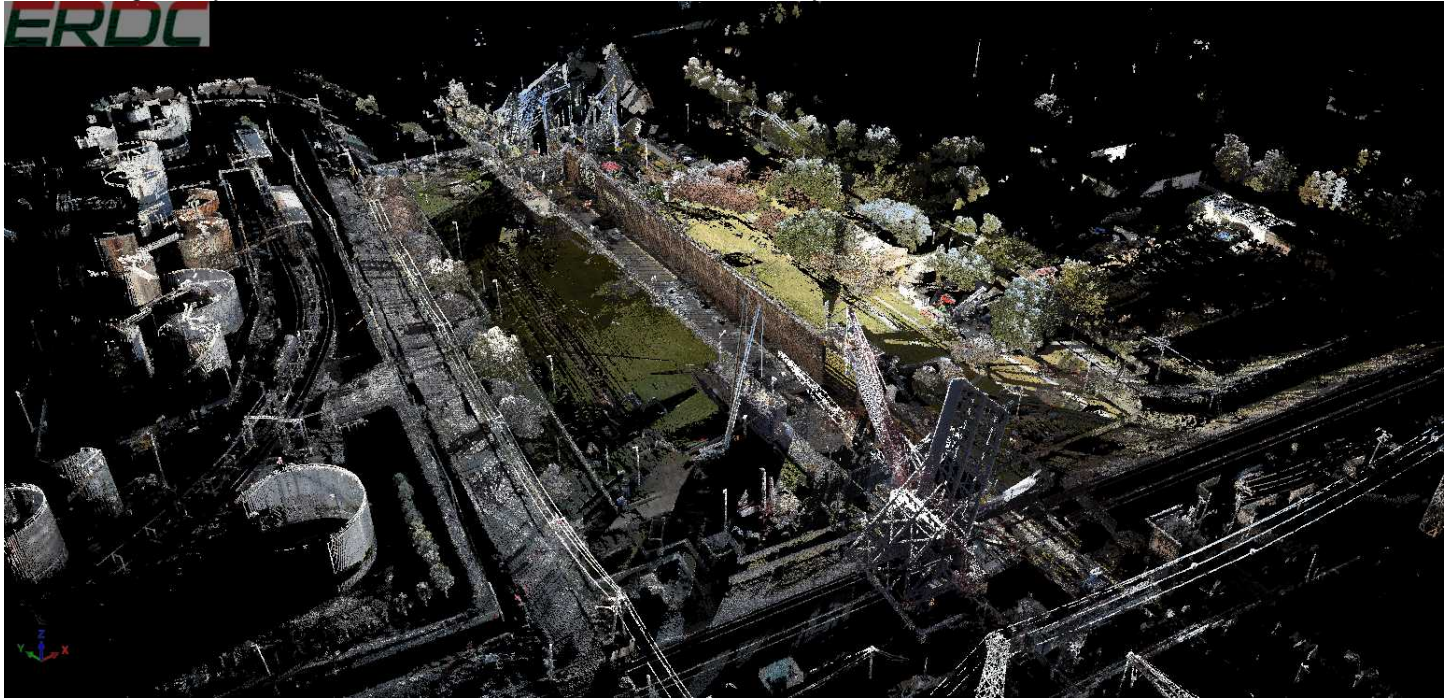
## ERDC Dredging Operations Technical Support Program (DOTS)

U.S. ARMY CORPS OF ENGINEERS

BUILDING STRONG®

### Response Summary:

A two man team from the Field Data Collection and Analysis Branch used the terrestrial laser scanner RIEGL VZ400 to complete a LiDAR survey of the Harvey Lock. This survey provided a high resolution point cloud of the lock chamber and surrounding facility near the chamber to be used as a baseline survey.



### Period of Performance:

29 Nov 2017 to 18 Jan 2018

### Benefits of the Response to the USACE Dredging/Navigation Program:

The data collected at Harvey Lock is necessary in setting a baseline data set for future comparison surveys. This data set is survey grade accurate. Any further data collected at the Harvey Lock can be used to perform deformation monitoring or any change detection. As-built's can be designed from the point cloud and used for future design considerations. In house tools have been built to provide further information as necessary.

### Deliverable:

The product delivered is point cloud data in the form of the standard LiDAR format (LAS 1.2), images, and flythrough video of the point cloud.



Providing environmental and engineering technical support to the U.S. Army Corps of Engineers  
Operations and Maintenance navigation and dredging missions

Bryan Herring  
CHL • [George.b.herring@usace.army.mil](mailto:George.b.herring@usace.army.mil)

DOTS ID: DOTS-18-R5