



## ERDC Dredging Operations Technical Support Program (DOTS)

U.S. ARMY CORPS OF ENGINEERS

BUILDING STRONG®

### Response Summary:

The purpose of this reconnaissance trip was to visit Brunswick Harbor, GA to provide an introductory understanding of the project area for an upcoming ship simulation study and to take digital imagery of the harbor. This trip allowed for a kick-off meeting with local harbor pilots, ERDC personnel, and the U.S. Army Corps of Engineers Savannah District (CESAS) personnel. During the kick-off meeting, current port operations and the proposed harbor improvements to be studied during a ship simulation study were discussed. During this trip, digital imagery was taken aboard several vessels around the area of interest. Several vessel transits occurred riding Ro/Ro vessels outbound from Colonel's Island Terminal in Brunswick Harbor (vessel tracks are shown in purple and yellow in Figure 1) and riding a Ro/Ro inbound (vessel tracks are shown in green in Figure 1).

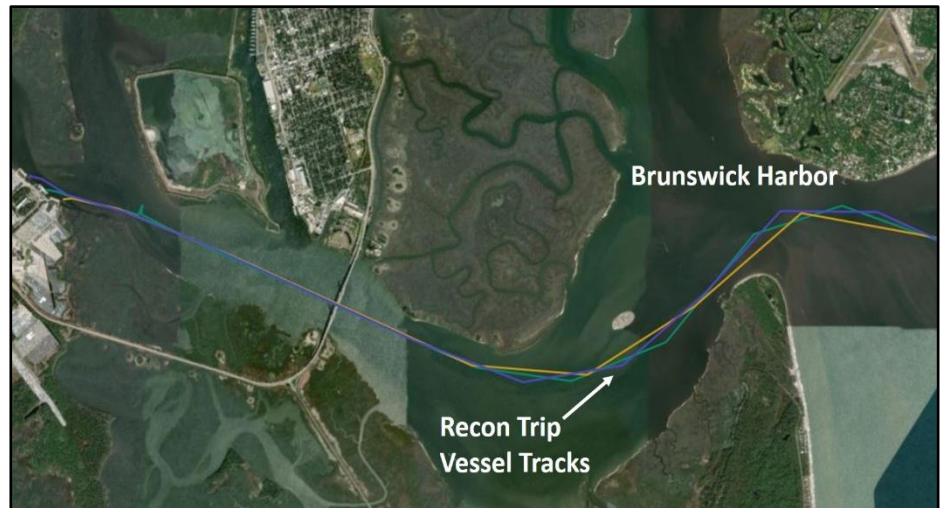


Figure 1. Vessel tracks for the Brunswick Harbor reconnaissance trip

### Period of Performance:

The reconnaissance trip was conducted from July 8 – 12, 2019

### Benefits of the Response to the USACE Dredging/Navigation Program:

The digital images taken during the reconnaissance trip will be used to develop the ship simulator's visual database for a subsequent navigation study of Brunswick Harbor. This trip also facilitated a kick-off meeting for initial discussions with local pilots, ERDC, and CESAS.

### Deliverable:

A Feasibility Level Ship Simulation Program (FLSSP) is expected to occur in October 2019 for Brunswick Harbor. Following the completion of the FLSSP, a Letter Report will be sent to CESAS. Once the project moves into the Pre-Construction Engineering and Design (PED) phase, a complete ship simulation study will be completed which will result in a Technical Report being generated.

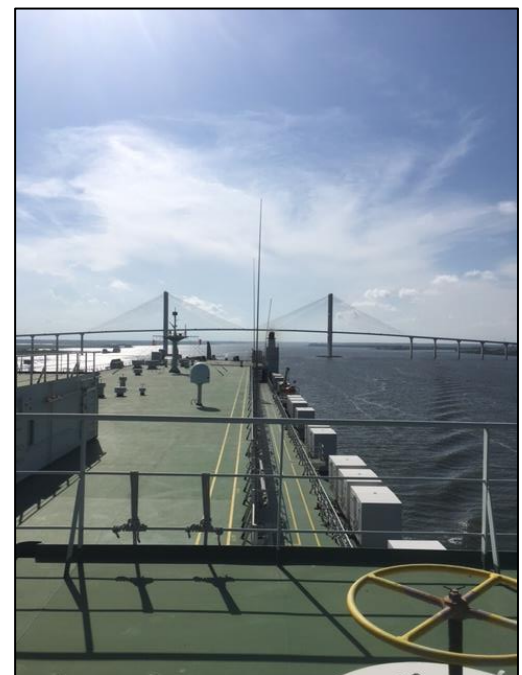


Figure 2. Ro/Ro vessel heading outbound approaching the Sidney Lanier Bridge

Providing environmental and engineering technical support to the U.S. Army Corps of Engineers Operations and Maintenance navigation and dredging missions

