



Vessel Movement of Accidents on Arkansas River at W.D. Mayo and Robert S. Kerr

ERDC Dredging Operations Technical Support Program (DOTS)

U.S. ARMY CORPS OF ENGINEERS

BUILDING STRONG®

Response Summary:

The USACE navigation and dredging community request historical ship tracking data for a specific time and date range as part of two incident investigations on the Arkansas River at W.D Mayo Lock and Robert S. Kerr Lock. Historic Automatic Identification System (AIS) for the two vessels of interest was acquired.

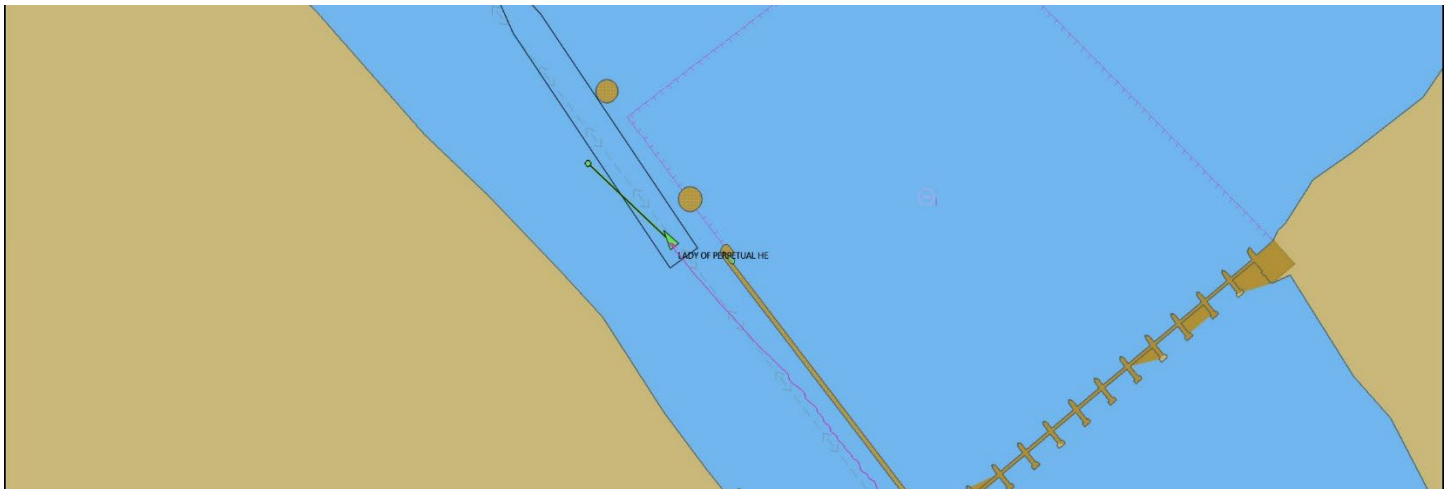


Figure 1. Still image produced featuring vessel operating in the time and area of interest.

Period of Performance:

The work for this DOTS request was completed in January 2023.

Benefits of the Response to the USACE Dredging/Navigation Program:

The USACE navigation and dredging programs benefitted by receiving rapid assistance to historical vessel position information in order to “replay” the events during the time and place of interest.

Deliverable:

The deliverables produced as part of this DOTS request were a series of videos and still images that showed the relative positions of the two vessels at different points in time.

This DOTS request was completed by Mr. Brady Towne (Brady.A.Towne@usace.army.mil) and Dr. Marin Kress (Marin.M.Kress@usace.army.mil) of the Coastal and Hydraulics Laboratory, Navigation Branch.



Figure 2. Screenshot from an animated playback video showing vessel position changing through the time and area of interest.



Providing environmental and engineering technical support to the U.S. Army Corps of Engineers
Operations and Maintenance navigation and dredging missions

Brady A. Towne
ERDC Coastal and Hydraulics Laboratory • Brady.A.Towne@usace.army.mil DOTS ID: DOTS-23-R22