

Beneficial Uses of Dredged Material and Regional Sediment Management **Mobile District**



Ship Island, MS



- **Extremely Costly To Create Additional Capacity**
- **Political, Real Estate & Environmental Issues Creating New Sites**



Beneficial Uses of Dredged Material



Gaillard Island - Mobile Harbor

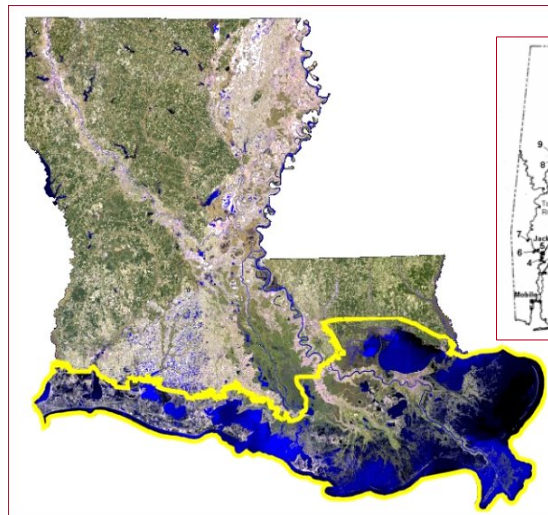


Benefits to Birds

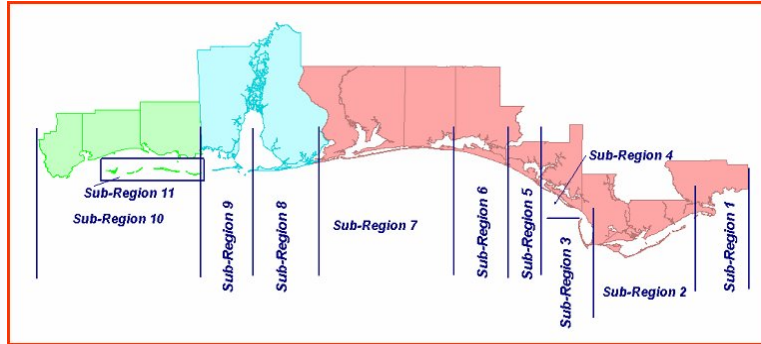
- Important site for Alabama colonial nesting birds
- Credited with recovery of the brown pelican.
 - Dropped from Endangered Species List in 1986
- Alabama's only nesting sites for
 - laughing gulls
 - royal terns
 - caspian terns
 - sandwich terns
- Other nesting birds include
 - herring gulls
 - gull-billed terns
 - common terns
 - least terns
 - black skimmers
- Utilized by many other birds
- Favored by many migratory waterfowl



LOUISIANA COASTAL AREA Ecosystem Restoration Project



Northern Gulf of Mexico Regional Sediment Management



375-miles of Shoreline
21 Federal Projects
8 State Parks
7 Military Installations

Gulf Islands National Seashore
Harrison County Beach Fill
Panama City Beach Fill
Local Projects



Philosophy



- **Change practice of project specific management to regional scale management**
- **Stop managing projects & manage sediment as regional resource**
- **Requires holistic approach**
- **Informed management decisions**
- **Goal**
 - Maximize beneficial use of sediments
 - Minimize environmental impacts
 - Optimize Expenditures

...each year the Corps moves 250-300 MCY of sediment at a cost of more than \$700 Million.



Perdido Pass, Alabama

Plan

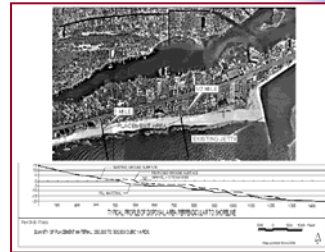
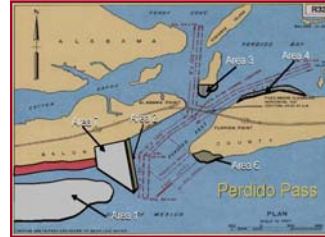
- **Modify disposal practices**
- **More effective sand bypassing**
- **Monitor performance**

Benefits

- **Downdrift replenishment**
- **Reduce re-handling**
- **Storm damage mitigation**

Management Decision

- **1/2 - 1 mile downdrift placement**
- **Additional cost**
- **Real Estate requirements**



May 2002



CORPS OF ENGINEERS

Escambia River, Florida

Figure 2-1. Sampling Station Locations in the Escambia River.



Conclusions

- RSM approaches are new
 - Benefits may be slow to realize
- Requires a change in management philosophies
- Cooperation and partnerships between stakeholders at all levels
- Monitoring is important
- Use what we learn to make future management decisions