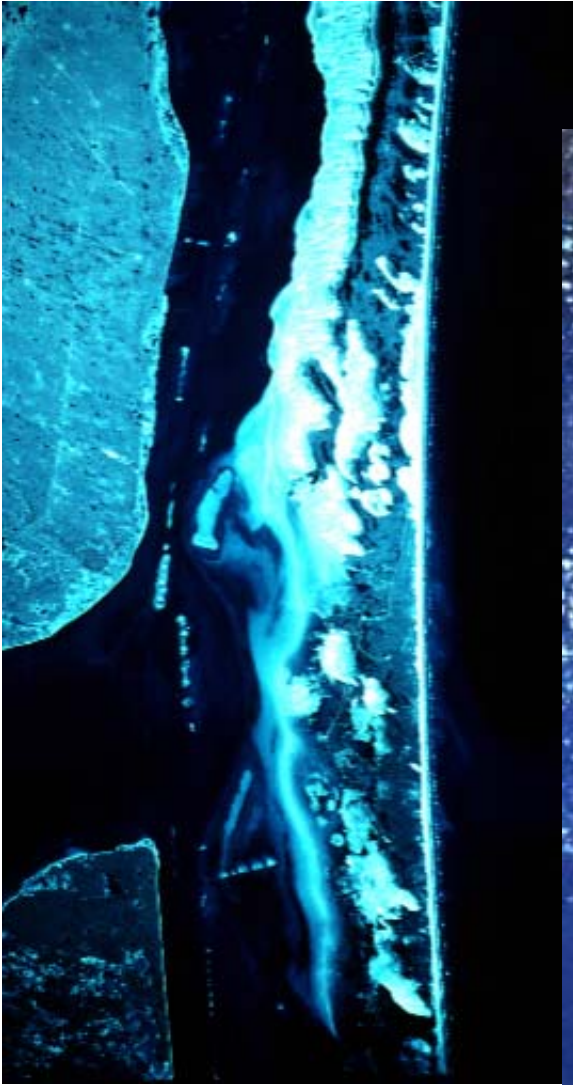




Wind-Tidal Flats

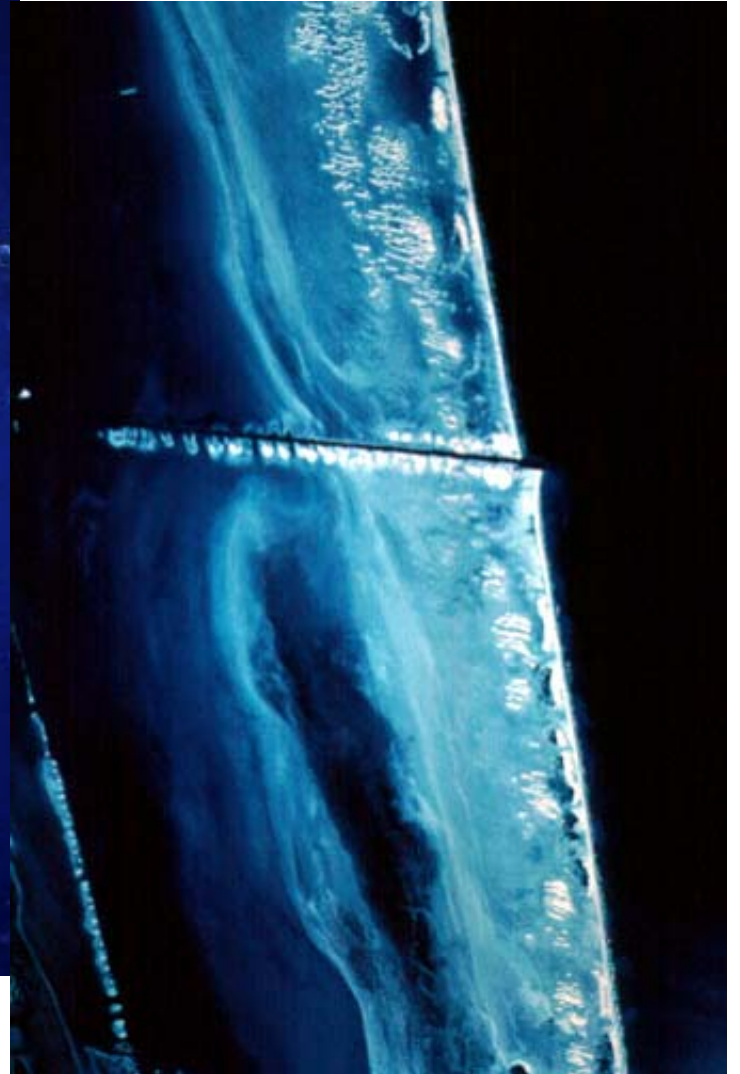
- ~ 850 km² in Laguna Madre (Texas)
- Replace salt marsh on central Texas coast & south
- Small amounts elsewhere on Texas coast



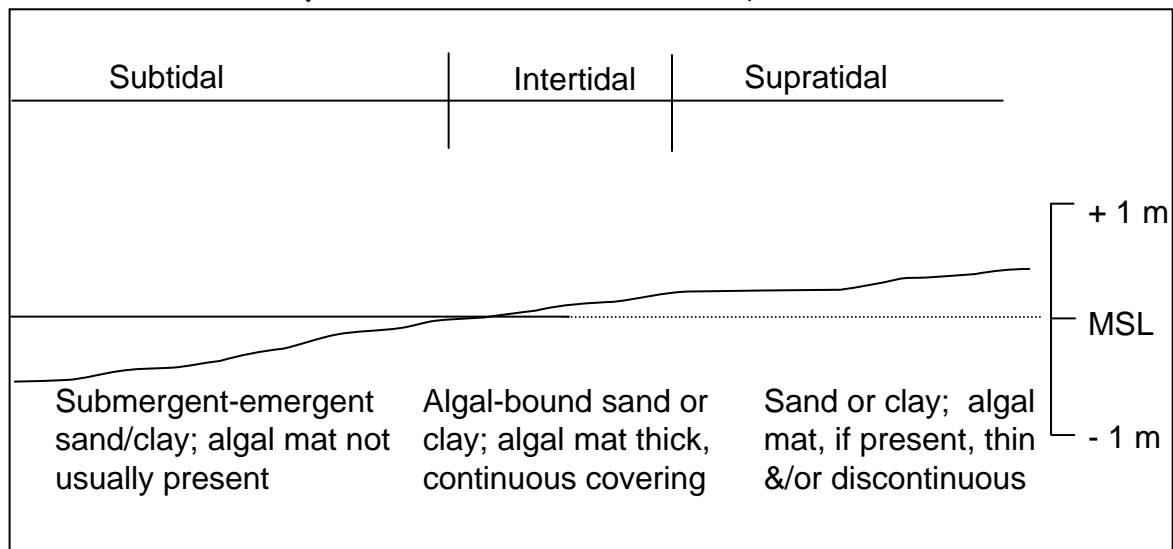
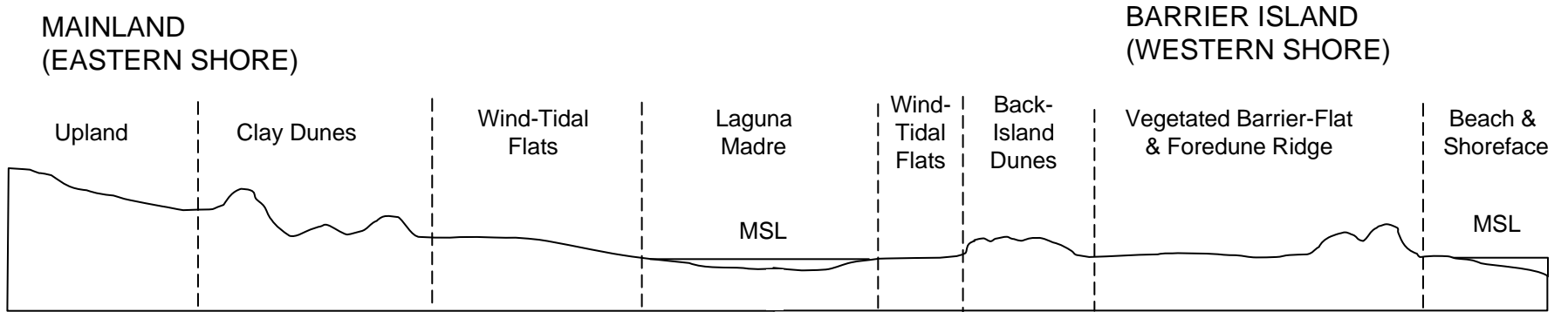
Yarborough Pass



Land Cut



Mansfield Pass

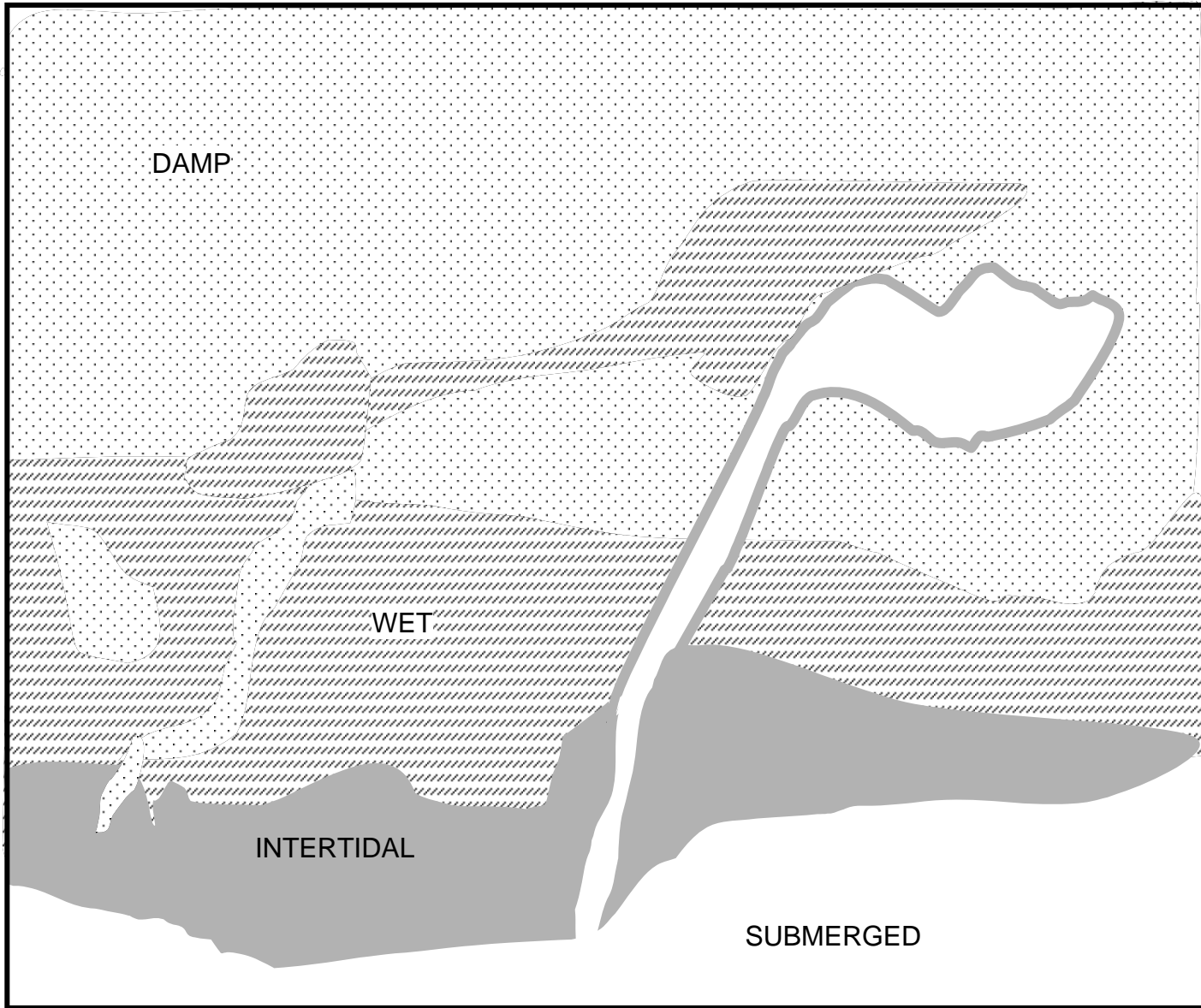


Inundation/Exposure

- Irregular, unpredictable
- Wind-driven







Primary Productivity

- Cyanobacteria
- 20-40% *Spartina*



