

HUI KU MAOLI OLA

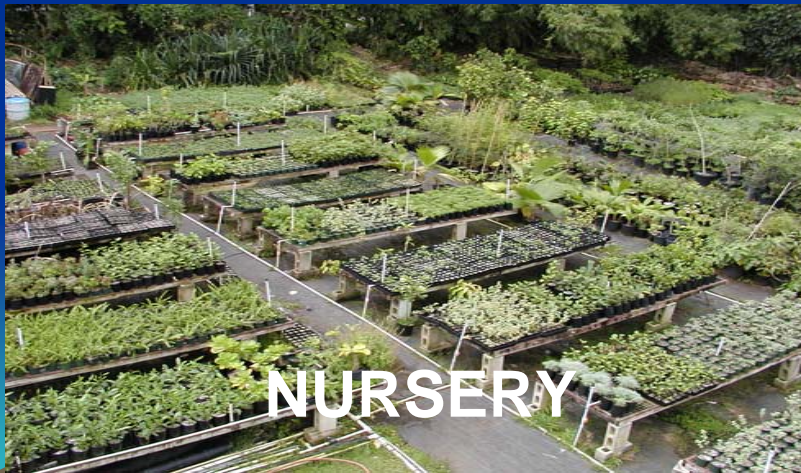
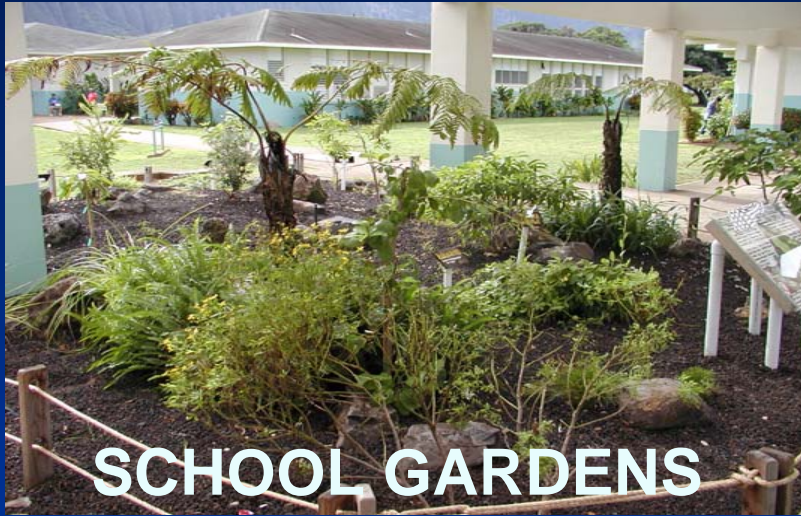


BEFORE
AFTER

NATIVE HAWAIIAN PLANT SPECIALISTS
AND ENVIRONMENTAL SLAVES

Ha'iku, O'AHU

COMPANY BACKGROUND

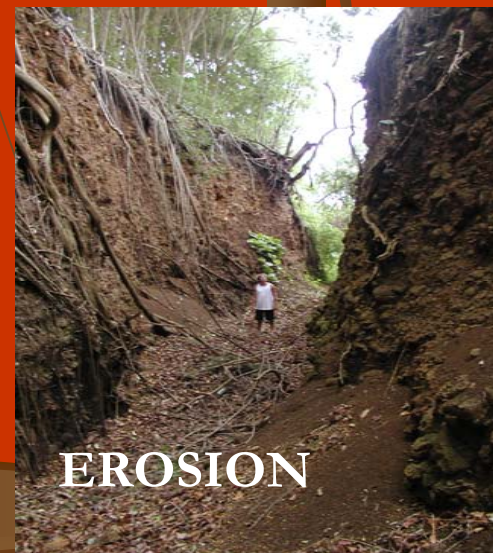
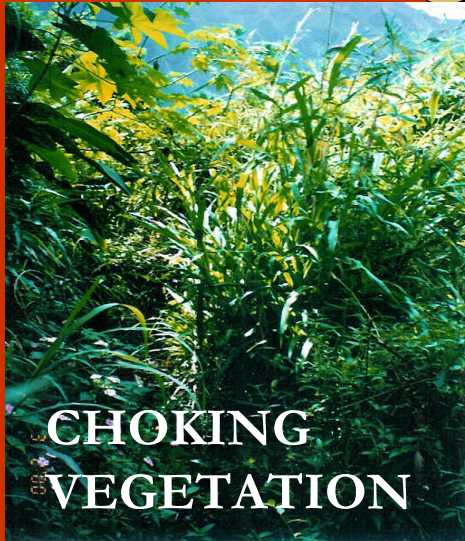


SOME TYPICAL WATERSHED PROBLEMS



- MASS AGRICULTURE
- LOSS OF STREAM FUNCTION
- DESTRUCTION OF WETLANDS
- COMMUNITY APATHY
- WATER CONTAMINATION

PHYSICAL PROBLEMS OF THE STREAMS



STREAM RESTORATION STEPS

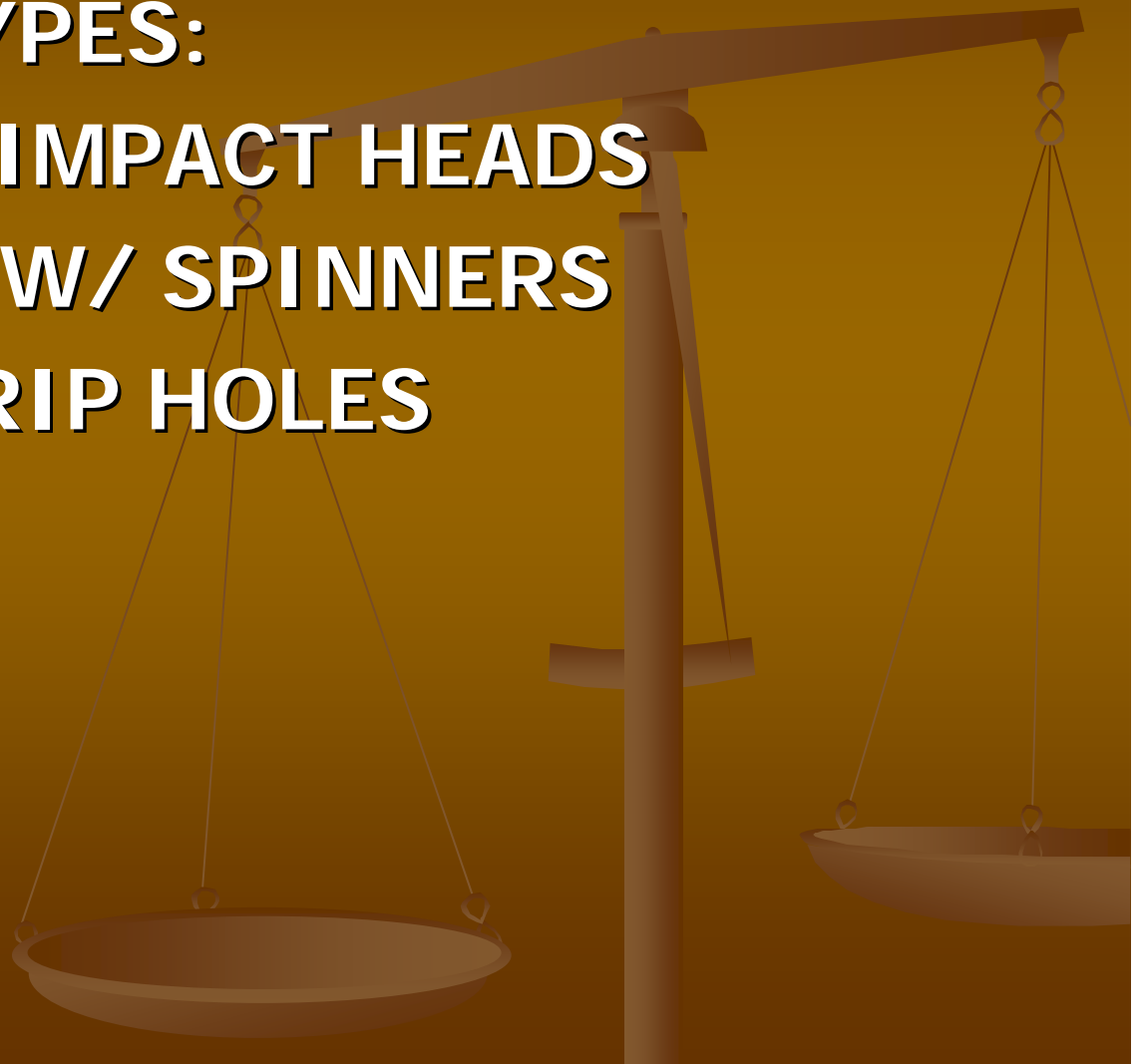


- **REMOVAL OF WEEDS**
- **INSTALLATION OF IRRIGATION**
- **PLANT WITH NATIVES**
- **WEED SUPPRESSION**

NO WAIT, IRRIGATE!!!

IRRIGATION TYPES:

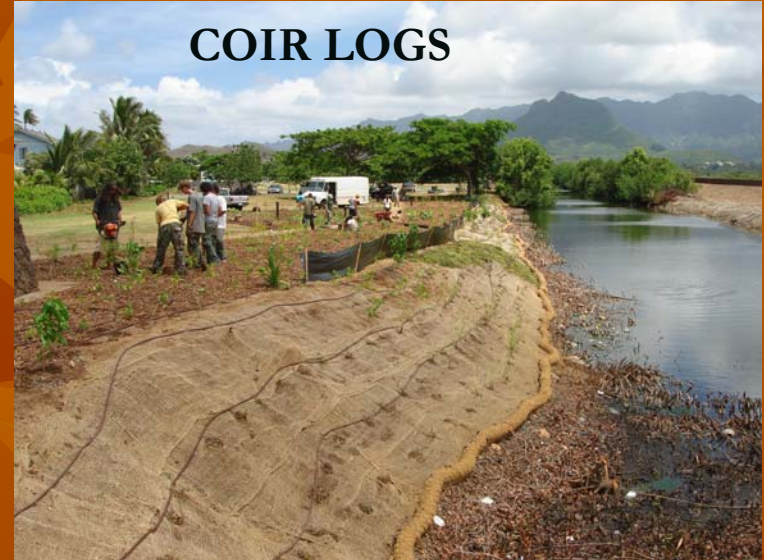
- PVC PIPE W/ IMPACT HEADS
- POLYTUBING W/ SPINNERS
- T-TAPE W/ DRIP HOLES



Geotextiles



SILT FENCES



COIR LOGS



JOOT MATTING



CHOICE PLANT PICKS



- TOUGH AND HARDY
- NATURAL CONDITIONS
- ABLE TO COMPETE WITH WEEDS
- USEFUL FOR WILDLIFE AND OR PEOPLE



GROUNDCOVERS



'AE'AE



POHINAHINA



'ILIE'E



POHUEHUE

More Groundcovers



‘Akulikuli



Nanea

SHRUBS



Naupaka Kahakai



Achyranthes splendens var.
rotundata

STREAM SHIDE SHRUBS

‘ILIMA



MAIAPILO



MA'O



KOKI'O KE'OKE'O

SHOME MORE SHRUBS

KULU'I



NAIO



'AWEOWEO



'A'ALI'I

STREAM TREES



Lonomea



Kou

Native Rushes and Sedges



Makaloa: *C. laevigatus*



'Aka'akai: *S. lacustris*



Pu'uka'a: *C. trachysanthos*

Native Grasses



Kawelu: Eragrostis



Pili: Heteropogon



'Aki'aki: Sporobolus



Kamanomano: Cenchrus

PLANTING STRATEGY



■ VOLUNTEERS

■ PROS

- ▮ Many Hands
- ▮ Little or no cost

■ CONS

- ▮ Crowd control
- ▮ Poor quality installation
- ▮ Time conflicts



■ RESTORATION TEAM

■ PROS

- ▮ Quality work
- ▮ Ready to work when you are

■ CONS

- ▮ You have to pay them
- ▮ Less hands

MAINTENANCE



- ❖ WEED TIL YA BLEED
- ❖ WEED AGAIN
- ❖ WEED SOME MORE
- ❖ FOLLOW UP WITH WEEDING
- ❖ TRY THIS: WEEDING
- ❖ IF THAT DOESN'T WORK, PERHAPS WEEDING WILL
- ❖ FINALLY: WEED

IDEAL RESTORATION RE-CAP

- ✓ WEED EAT & CLEAR VEGETATION
- ✓ INSTALL IRRIGATION
- ✓ IRRIGATE & WAIT 2 WEEKS
- ✓ RODEO
- ✓ IRRIGATE & WAIT AGAIN 2 WEEKS
- ✓ RODEO AGAIN
- ✓ WAIT TWO DAYSS
- ✓ INSTALL NECESSARY GEOTEXTILES
- ✓ PLANT
- ✓ IRRIGATE DAILY FOR AT LEAST 2 WEEKS THEN
REDUCE WATERING TO TWICE A WEEK FOR 2
WEEKS THEN PAU
- ✓ MAINTAIN ∞

Before and After

Kahawai Stream Waimanalo

MAY 2001



FEB 2002



MARCH 2003



Before and After Waimanalo Stream

JUNE 2001



APRIL 2002



DECEMBER 2003



Before and After Kaha Park

MAY 2007



JUNE 2007



CONTACT INFORMATION



Hui Ku Maoli Ola
46-403 Ha'iku Rd
Kane'ohe, HI 96744

Ph. 295-7777

Fax: 1-866-342-6970

www.plantnativehawaii.com

Email:
nativehawaiianplants@gmail.com