

A scenic view of a tropical coastline. In the foreground, a dark-colored pickup truck is parked on a grassy hillside. The hillside is covered in lush green vegetation. In the middle ground, there is a sandy beach with several palm trees. The ocean is a vibrant blue-green color, with white waves breaking near the shore. The background shows a distant horizon under a clear blue sky.

Hawaiian watersheds, nonpoint source pollution, and coral reefs...

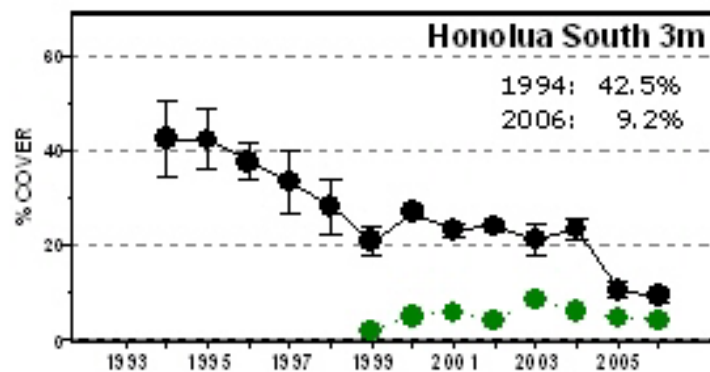
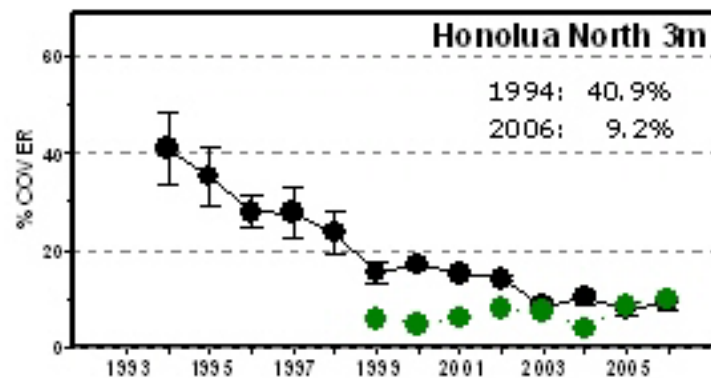
...A story of creeping degradation

A presentation by

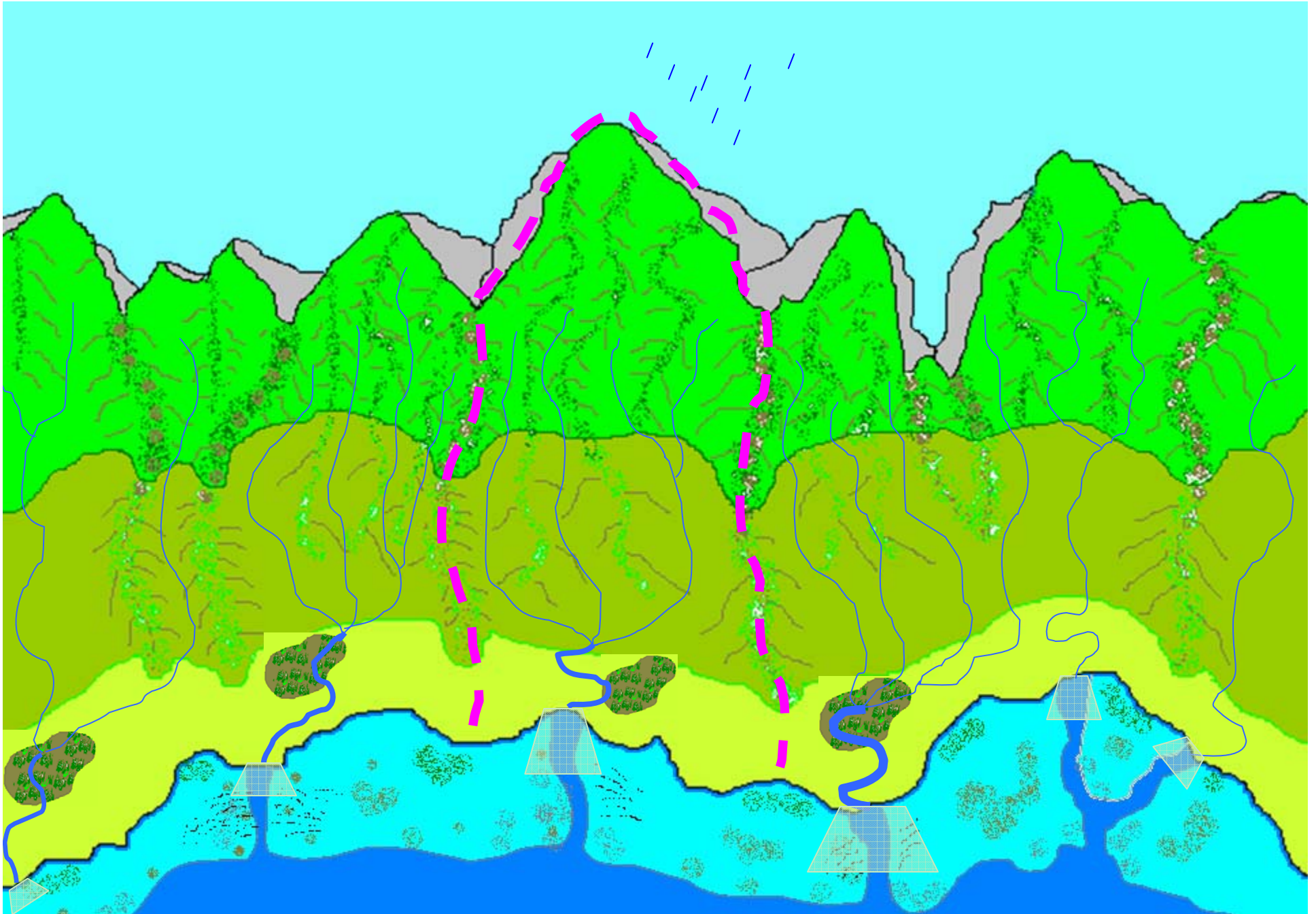
Wendy Wiltse, EPA

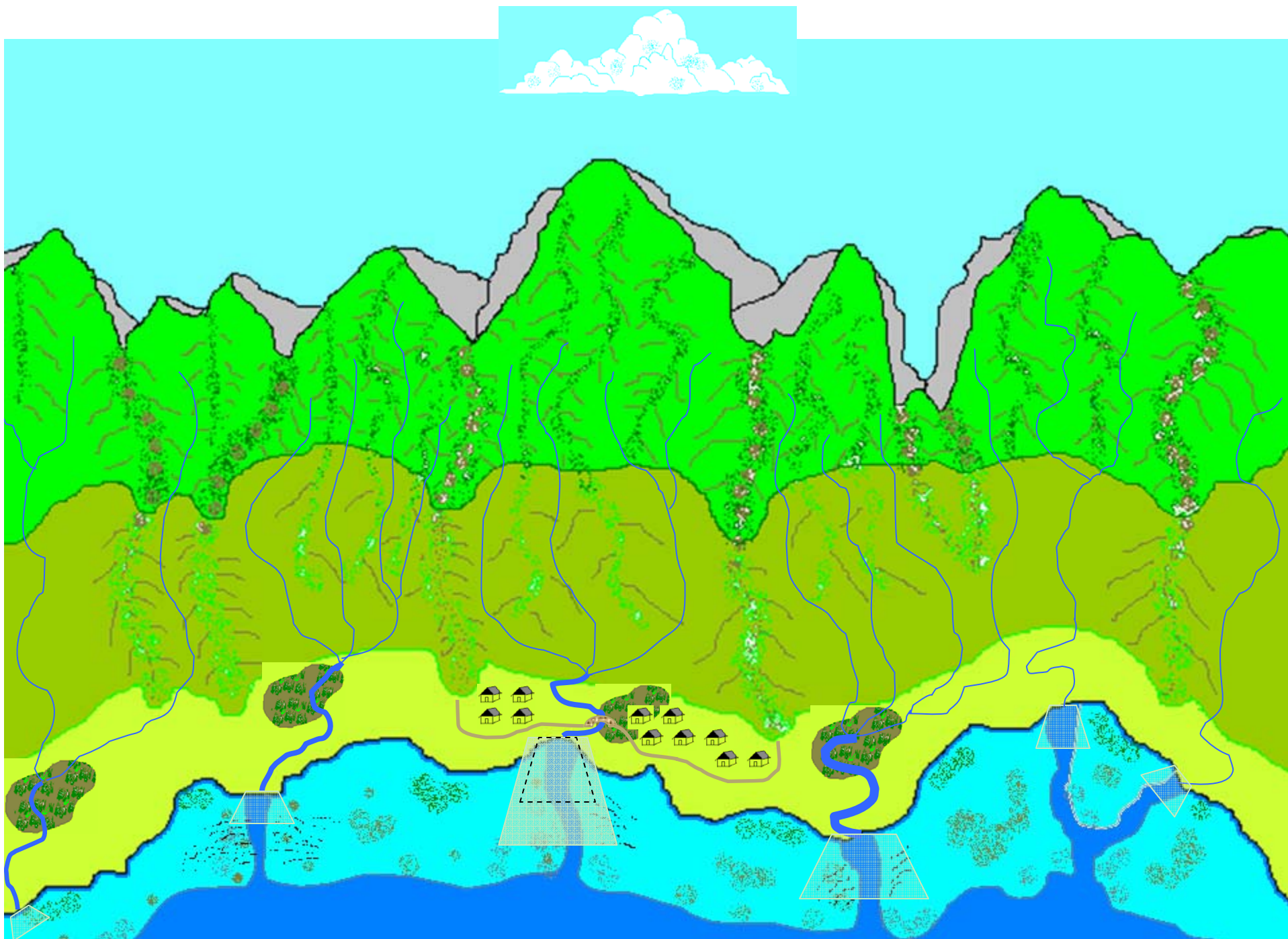
Gerry Davis, NOAA

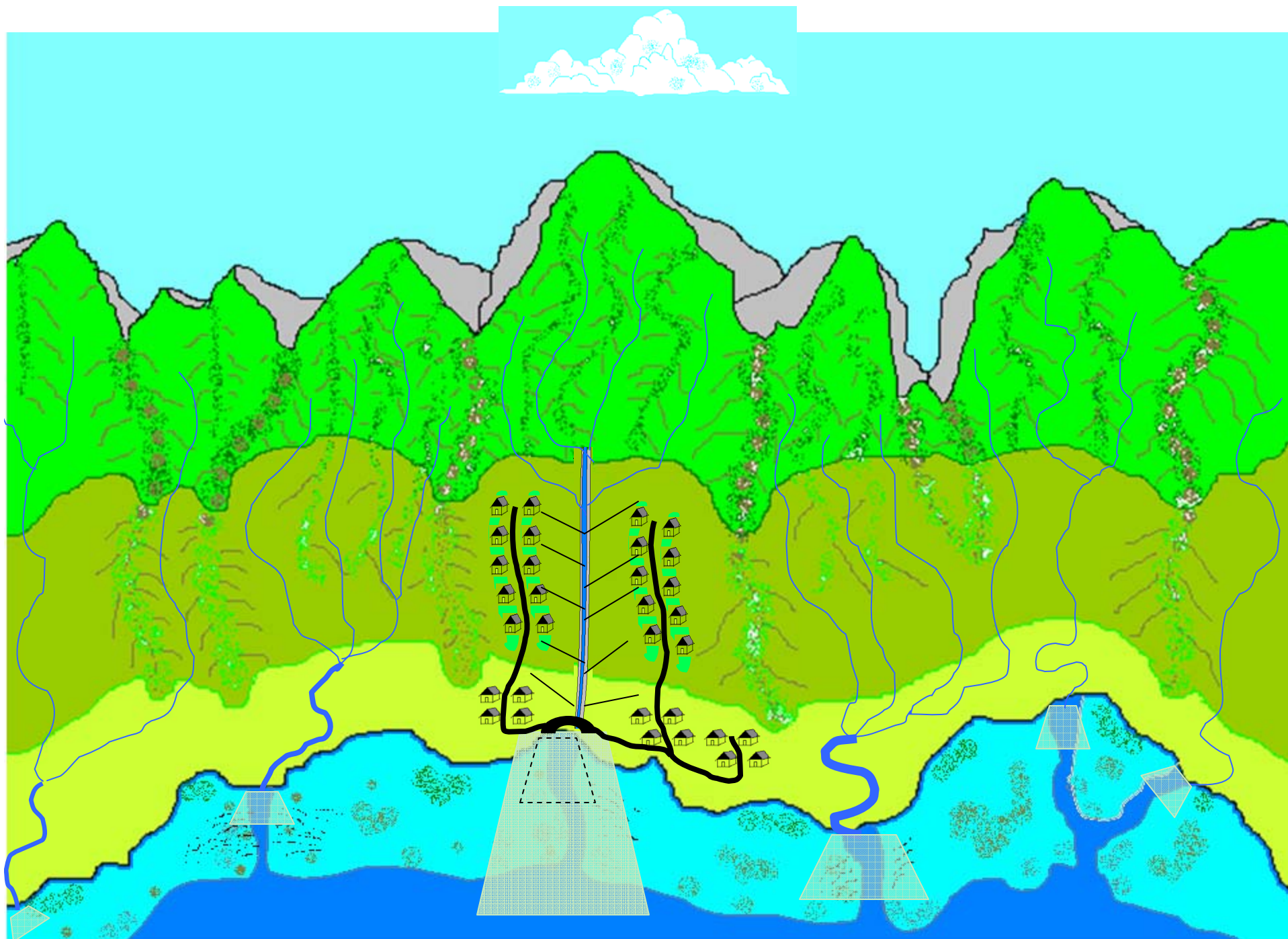
Kathy Chaston, NOAA



WATERSHED BOUNDARY



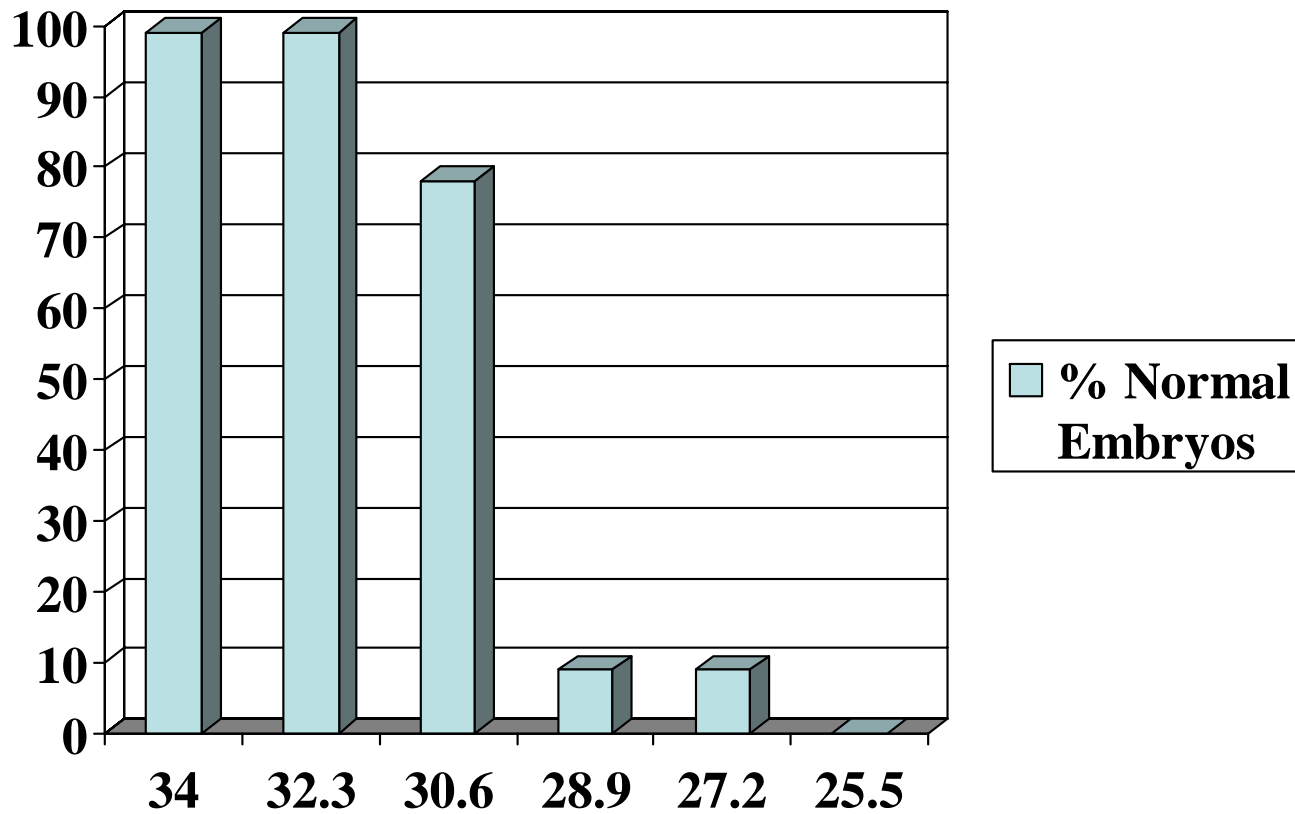




Coral Reefs: Rainforests of the Sea

- **410,000 acres of living reef in the MHI**
- **> 7,000 known species of marine plants & animals in HI**
- **> 25% of all marine life is endemic to Hawaii**

Effects of Altered Salinity on Coral Fertilization and Development



Salinity in PPT

Stressors entering HI ocean from watersheds

(from USGS NAWQA)

- Groundwater: fresh water & nitrogen
 - Base flows streams: freshwater, nitrogen, herbicides(ag)
 - Storm flow streams: freshwater, sediments, phosphorus, chromium, copper
- Agriculture: herbicides, arsenic
- Urban: insecticides (chlordane & dieldrin), lead, zinc

Organic compounds in sediment and fish in Oahu streams vs. US

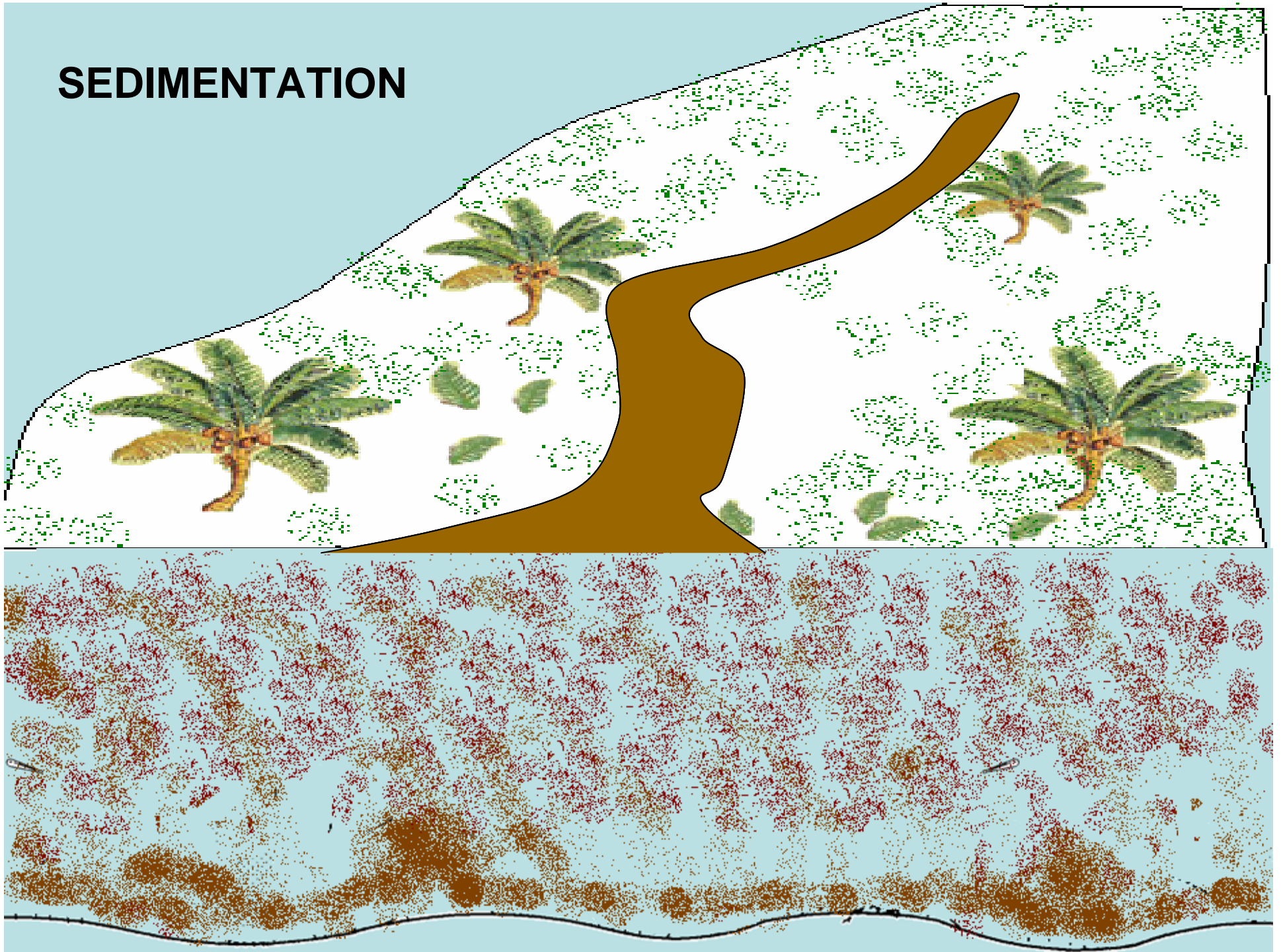
(from USGS NAWQA)

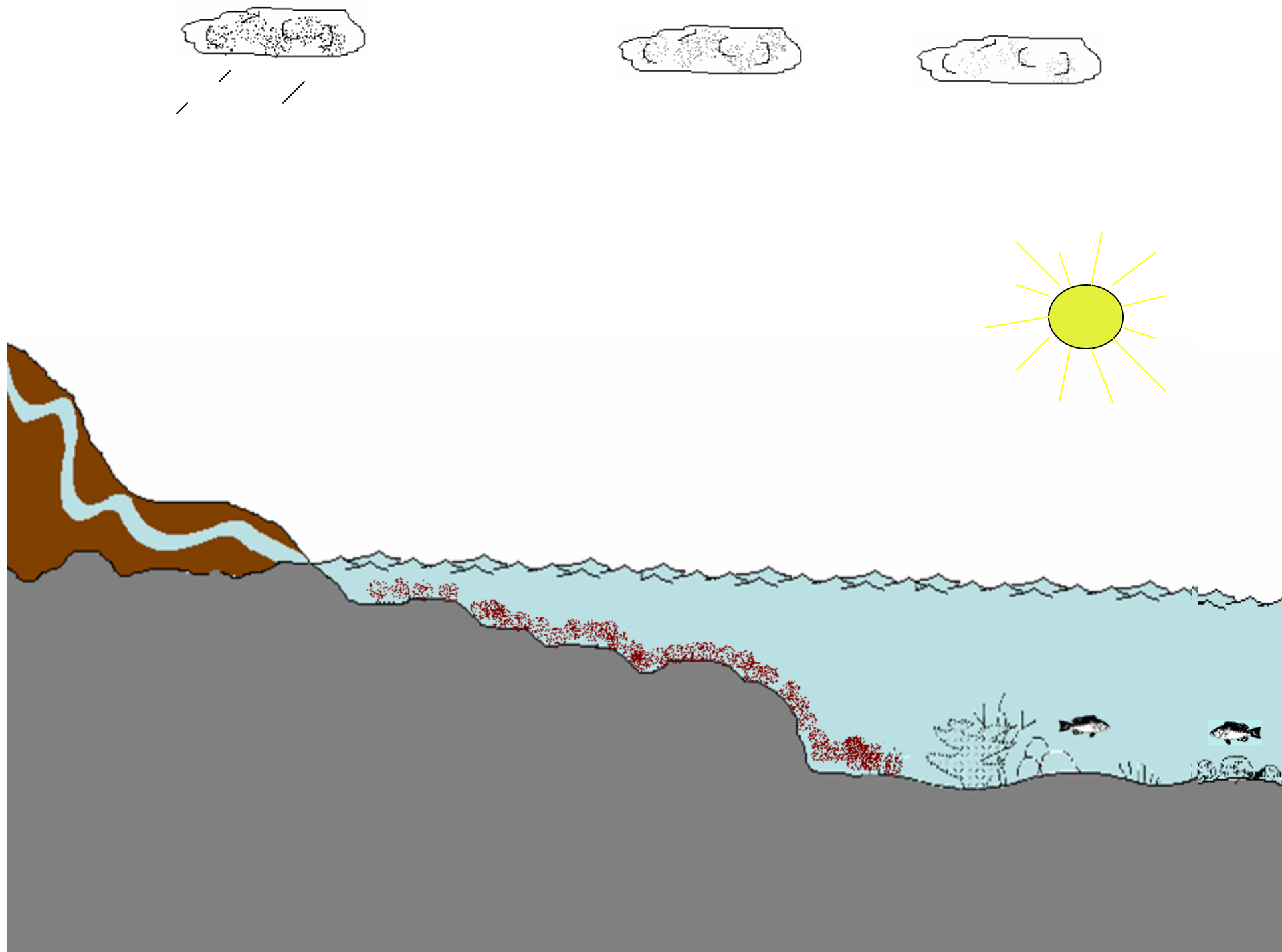
Pollutant	Conc: % of national range	# sites
Dieldrin Chlordane	Highest in US	1 Nuuanu stream
PCBs	15	5 sites Urban + ag
PAH	25	8 sites
DDT	5	3 sites Ag/urban

EPA EMAP: Hawaiian Estuaries and Bays 2002

- Samples
 - 50 estuary/bay samples statewide
 - +30 Oahu urban harbors, marinas, canals
- Sediment contamination
 - Metals exceeding ERM (Effects Range Median) conc: Hg(<1%, 5%), Cu 4%
 - Organic contaminants: PCBs, DDT, chlordane (none exceed ERM)

SEDIMENTATION

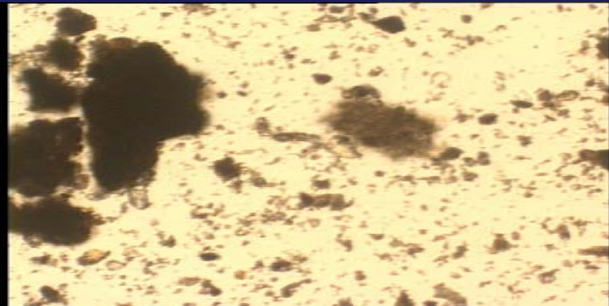




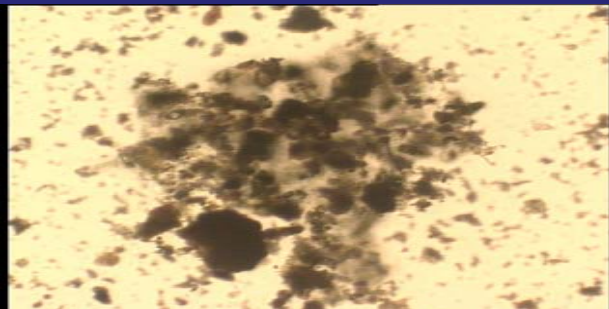
**S
e
d
i
m
e
n
t
a
t
i
o
n**



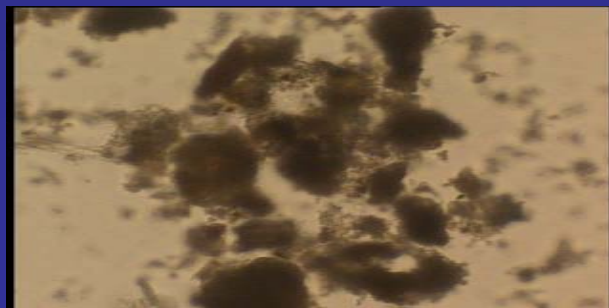
Freshwater



5 min



10 min



30 min

Width=1,000 μm

Models estimate that 22% of all coral reefs world-wide are at high or medium threat from inland pollution and soil erosion.

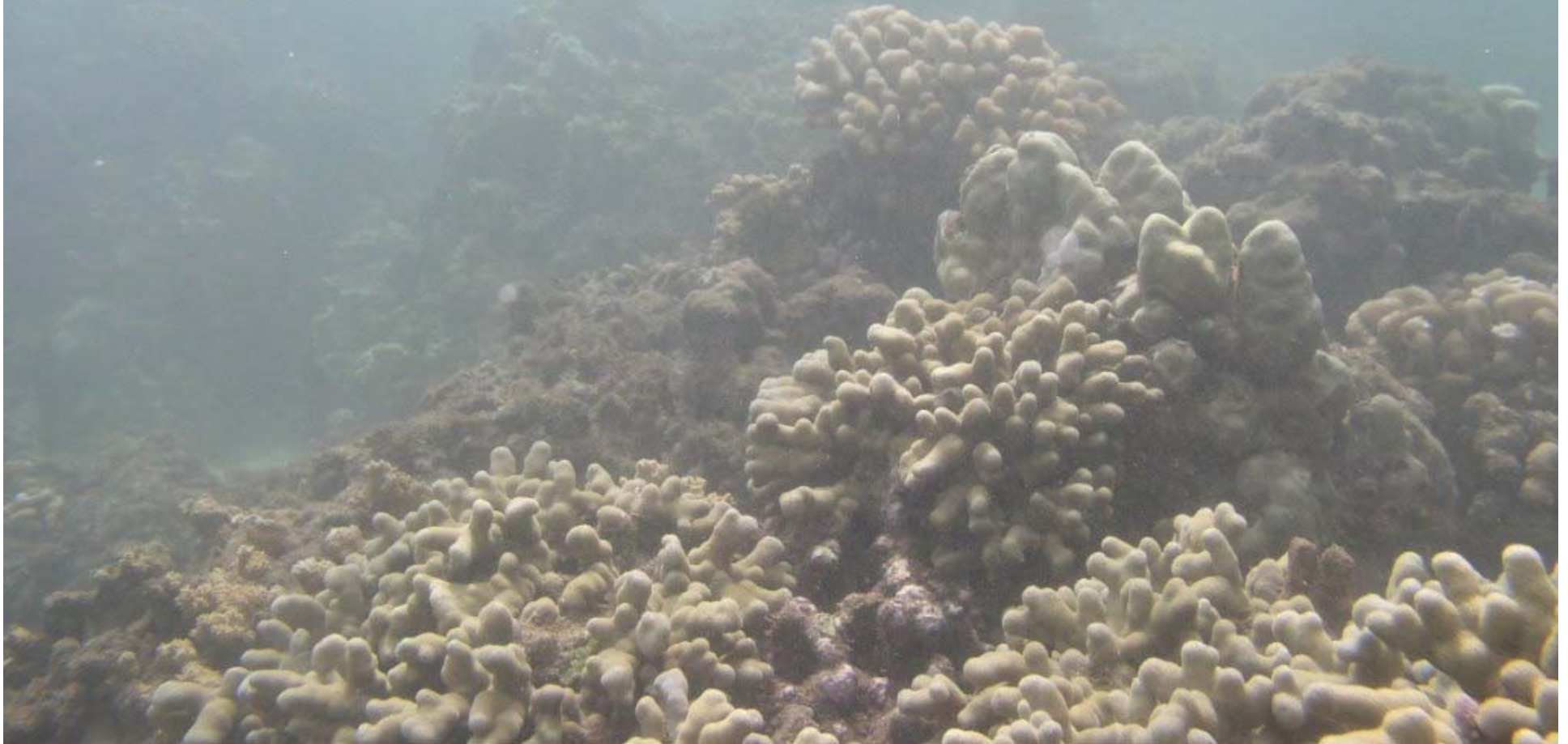
(Bryant et al. 1998).

Runoff impacts growth & survival of hard coral colonies



Bill Walsh DAR

Sediments reduce light and decrease coral growth



Sediments smother coral & sloughing wastes energy



Runoff effects coral reproduction & recruitment

- Coral settlement rates are near zero on sediment covered surfaces
- Sediment tolerance is lower in new recruits



Nutrients fuel invasive algae that interact with coral populations



Sediment runoff is the most widespread land-based pollution threat to Hawaii's coral reefs



Acute & Chronic

Kohala
DAR



Acute & Chronic

Hanalei
USGS



July 1993....Kona rain storm

Sept. 1993...Photo taken

Nov. 1993...Plumes reduced

Creeping
degradation??

