

Beneficial Use of Dredged Material in the Galveston District

Tricia Campbell, P.E.

Operations Manager

U.S. Army Corps of Engineers

Galveston District

Galveston District

Custodians of the Coast



US Army Corps of Engineers
BUILDING STRONG®



Galveston District Beneficial Use Project Locations



Galveston District –Custodians of the Coast



BUILDING STRONG®

Galveston District Beneficial Use Statistics

	FY 10	FY 12	FY 13
Total Amount Dredged	24,500,000	20,000,000	20,500,000
Total Amount Used for BU	4,000,000	3,200,000	4,300,000
Percent Beneficial Use	~16%	~16%	~20%



Notable Galveston District Beneficial Use Projects



Galveston District – Custodians of the Coast

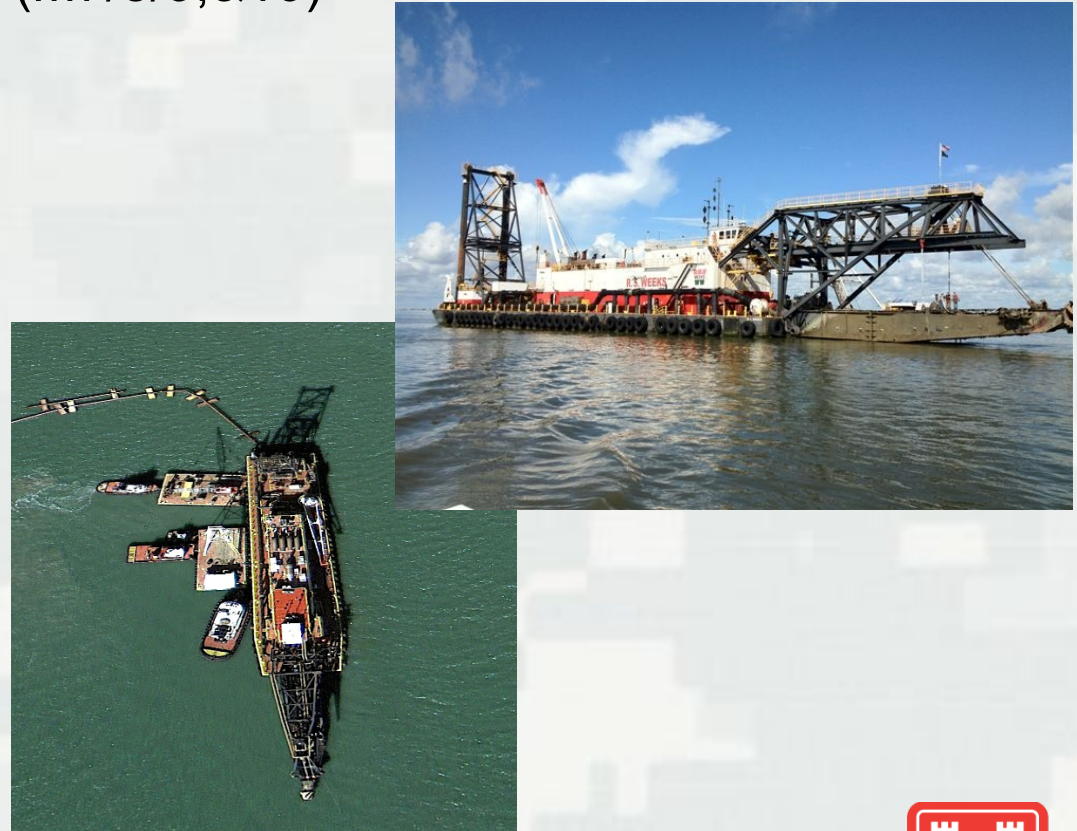


BUILDING STRONG®

Houston Ship Channel—Upper Galveston Bay



Aerial of Existing Atkinson Island marsh cells and new cells currently under construction (M7/8/9,&10)



Galveston District –Custodians of the Coast



BUILDING STRONG®

Houston Ship Channel—Upper Galveston Bay

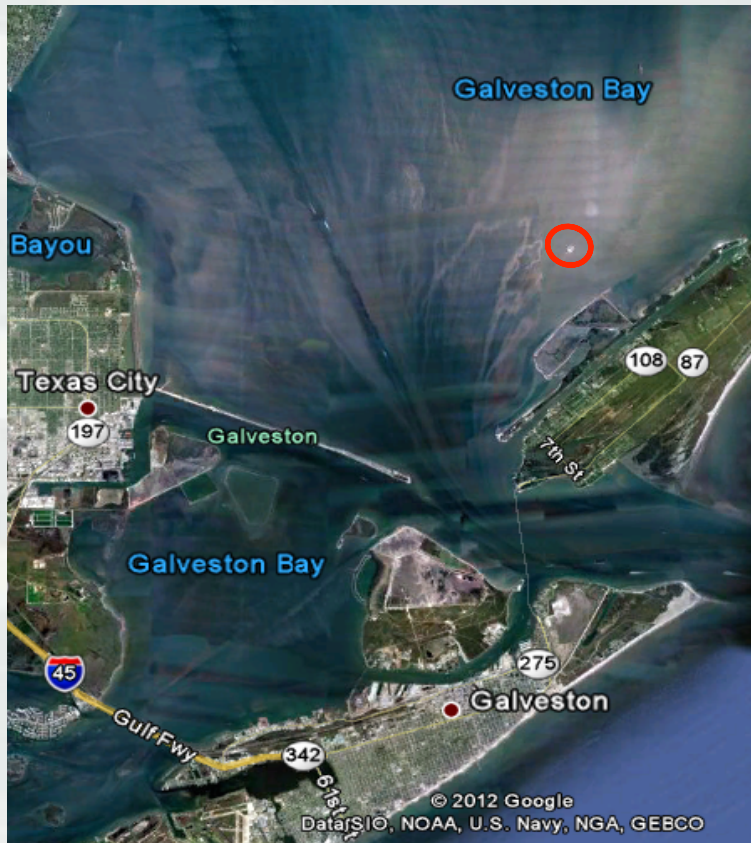
Atkinson Island marsh cell under construction



©2010 Google
BUILDING STRONG®

Houston Ship Channel—Lower Galveston Bay

Evia Island--Bird Island Creation

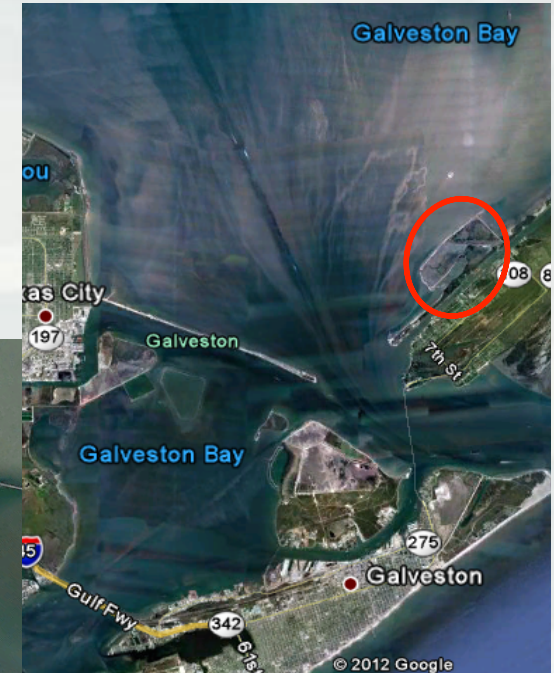


Galveston District –Custodians of the Coast

BUILDING STRONG®

Houston Ship Channel—Lower Galveston Bay

Bolivar Marsh—
Channelization and
Marsh Creation (ongoing)



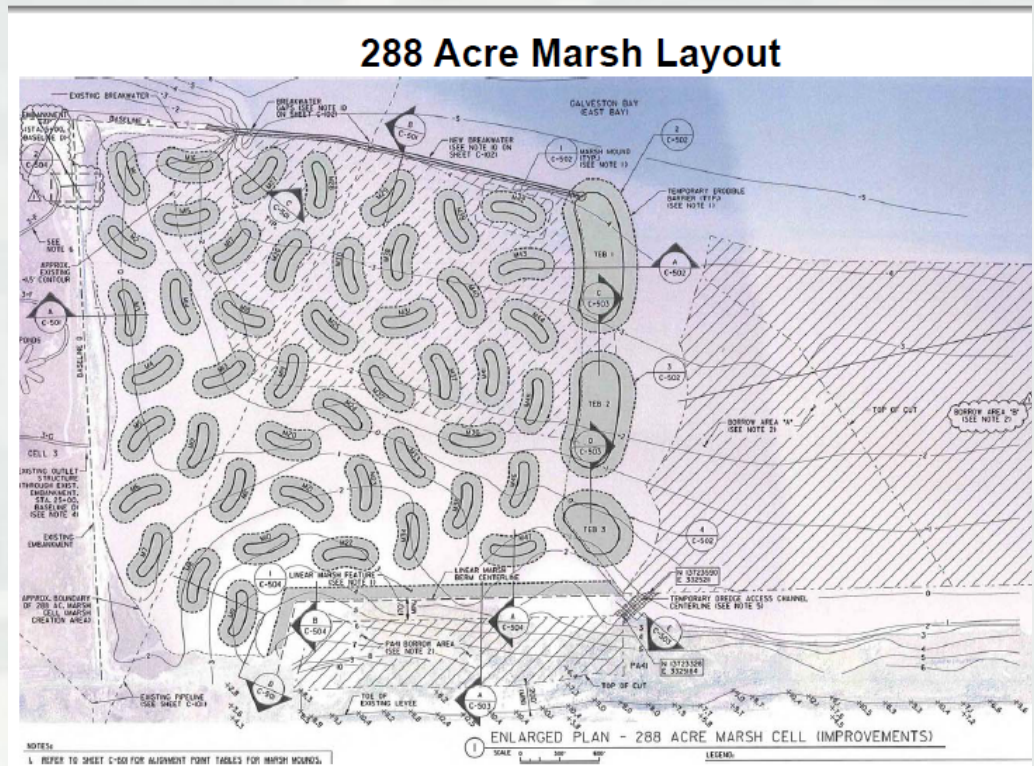
Galveston District –Custodians of the Coast



BUILDING STRONG®

Houston Ship Channel—Lower Galveston Bay

Bolivar Marsh—Marsh Creation (ongoing)



Galveston District –Custodians of the Coast



BUILDING STRONG®

Neches River Channel (Sabine-Neches Waterway) Bessie Heights Marsh



Marsh Creation

Channels form shortly after pumping of dredged material into open water area



Established 28 acres of marsh one year later

Galveston District – Custodians of the Coast



BUILDING STRONG®

Texas City Channel



727.520.8181
www.aerophoto.com

Texas City Channel

Image # 110524 6037
Date 05.24.11

Construction of containment levees for Beneficial Use Site

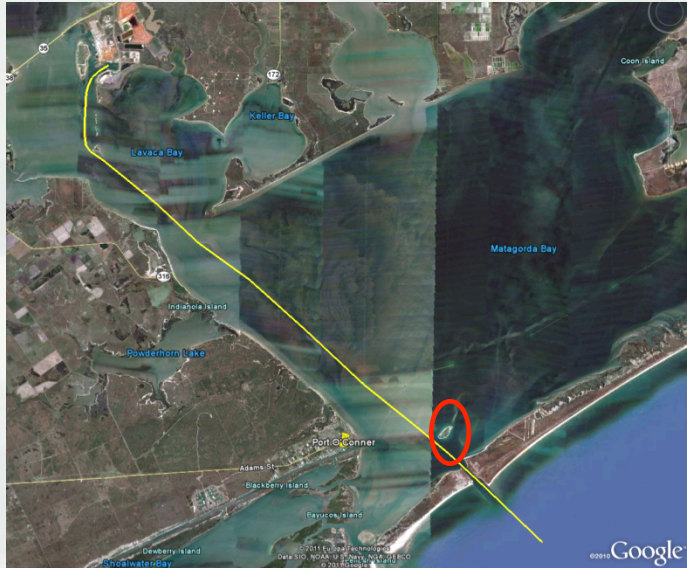
Galveston District – Custodians of the Coast



BUILDING STRONG®

Matagorda Ship Channel--Sundown Island

Nourishment along eroded areas



Galveston District –Custodians of the Coast



BUILDING STRONG®

Chocolate Bayou



Construction of Beneficial Use Sites



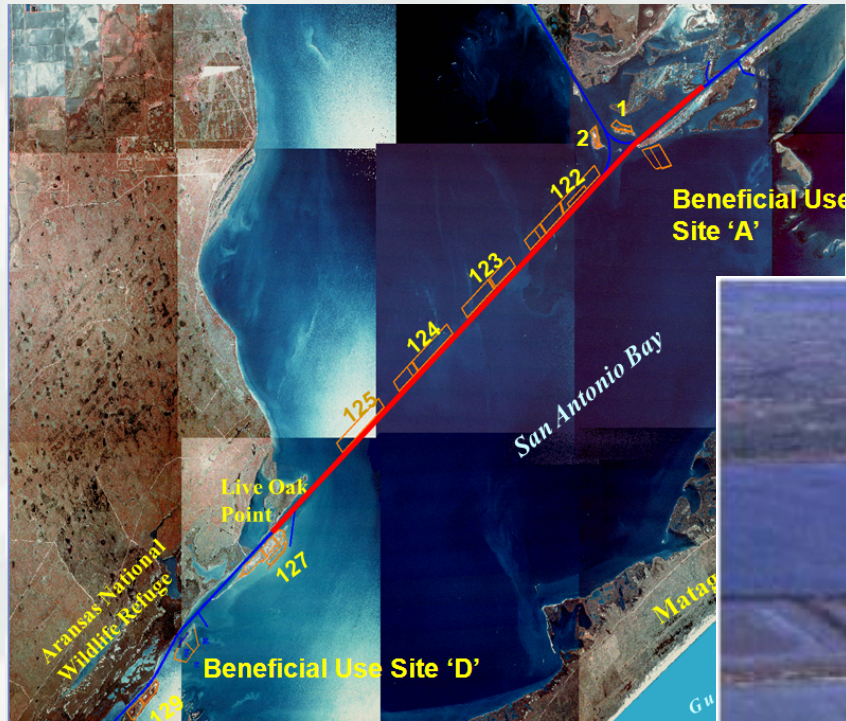
Galveston District –Custodians of the Coast



BUILDING STRONG®

GIWW-Aransas National Wildlife Reserve

Beneficial Use Projects



Create new cells at
BUS A, BUS B, & BUS D



Galveston District – Custodians of the Coast



BUILDING STRONG®

Gulf Intracoastal Waterway Beneficial Use Projects

Beach Nourishment

Little Beach



Rollover



Galveston District – Custodians of the Coast



BUILDING STRONG®

Channel to Port Mansfield

Beach Nourishment



Galveston District – Custodians of the Coast



BUILDING STRONG®

Brazos Island Harbor Beach Nourishment



Galveston District –Custodians of the Coast



BUILDING STRONG®

Mouth of the Colorado River

Beach Nourishment



Galveston District –Custodians of the Coast



BUILDING STRONG®

How is SWG trying to increase BU?

- Actively identify projects
- Re-evaluate our DMMPs
- Work with the RSM program
- Bring together Corps and Resource Agencies



2011 Beneficial Use of Dredged Material Workshop—30 August 2011

A workshop to discuss upcoming USACE projects and beneficial use opportunities along the Texas coast



Galveston District –Custodians of the Coast



BUILDING STRONG®

2011 Beneficial Use of Dredged Material Workshop

- Purposes:

- ▶ Bring together State and Local Resource Agencies to inform them of upcoming O&M projects
- ▶ Provide a forum for brainstorming potential BU opportunities
- ▶ Answer questions about procedures necessary to move forward with BU projects



2011 Beneficial Use of Dredged Material Workshop

■ Participants

- ▶ About 60 participants from Agencies and Corps

Atkins Global
Chambers Liberty County Navigation District
Chambers County Commissioner
Ducks Unlimited
Galveston Bay Foundation
Matagorda County Navigation District #1
National Oceanic and Atmospheric Administration (NOAA)
Shead Conservation
Shelmark Engineering
Texas Coastal Wildlife Refuge
Texas Parks and Wildlife Department
Texas General Land Office (GLO)
Texas Commission on Environmental Quality (TCEQ)
USACE Galveston
USACE Engineer Research and Development Center (ERDC)
USDA
U.S. Fish and Wildlife Service

Galveston District – Custodians of the Coast



BUILDING STRONG®

2011 Beneficial Use of Dredged Material Workshop

- Presentation Topics
 - ▶ Regional Sediment Management
 - ▶ Engineering With Nature
 - ▶ NEPA Compliance
 - ▶ Planning for Beneficial Use
 - ▶ FY12-13 Dredging Projects and Notable BU projects
 - ▶ Ongoing Dredged Material Management Plans



2011 Beneficial Use of Dredged Material Workshop

- Discussion Topics
 - ▶ Brainstorming potential projects
 - ▶ Identification of Needs



2011 Beneficial Use of Dredged Material Workshop

- Conclusion
 - ▶ Desire for more frequent BUDM meetings
 - ▶ Implement better communication between Corps and Resource Agencies
 - ▶ Begin identifying potential BU projects with teams
- 2012 Workshop: Tentatively Nov 6, 2012



Questions?



Tricia Campbell, P.E.

Operations Manager

U.S. Army Corps of Engineers

Galveston District

409-766-3153

tricia.c.campbell@usace.army.mil

Galveston District –Custodians of the Coast



BUILDING STRONG®