



COASTAL RESTORATION CONSTRUCTION CHALLENGES

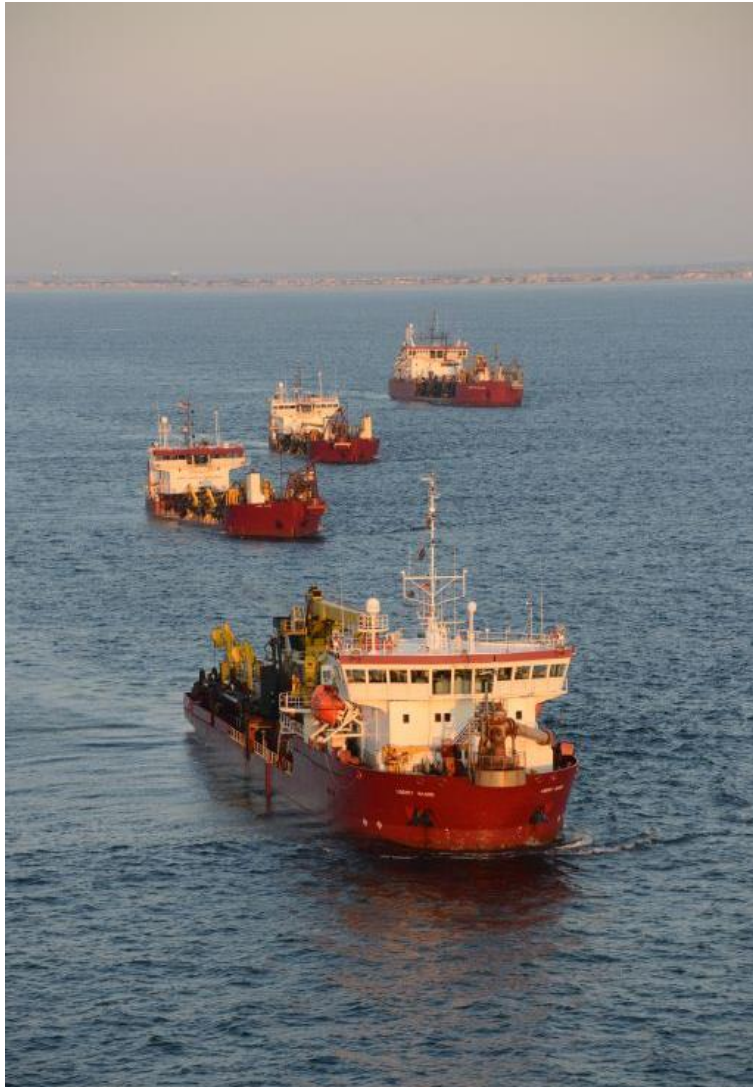




TRACK RECORD OF SUCCESS

- Beneficial Use
- Environmental Allies
- Nationwide Success Stories
 - West Coast
 - East Coast
 - Gulf Coast
 - Mississippi River





WHAT DO WE NEED TO MAKE THIS WORK?

- National Commitment to the coast
- Millions for maintenance not Billions for damages
- Collaboration
- Consistent Funding
- Coastal Research





UNDERSTANDING EXPECTATIONS

MUTUAL CHALLENGE

- Adaptability
- Funding
- Efficiency
- Industry Days





UNDERSTANDING EXPECTATIONS

MUTUAL CHALLENGE

- Project versus Program
- Forecasts
- Sustainability
- Transparency
- Industry Days





LOUISIANA SPECIFICS

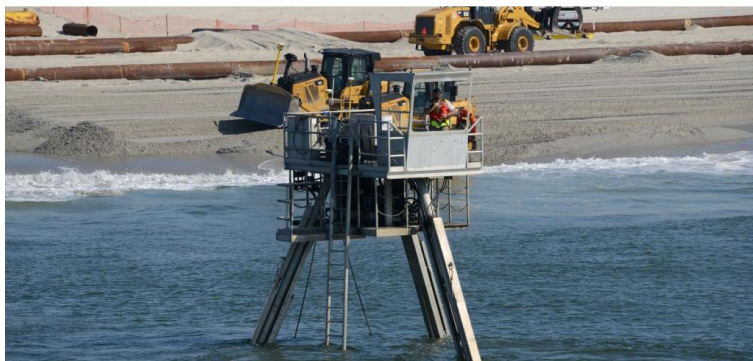
- Material Sources
- Design of borrow and fill
- Tolerances
- Environmental
- Lessons Learned



LOUISIANA GENERAL

- Restoration Concepts
- Construction Scheduling
- Maintenance





TECHNICAL CONSIDERATIONS

- Transport or pumping Distances
- Borrow location – Offshore or River sources
- Equipment selection
 - Hoppers
 - Cutters
- Boosters
- Alternate energy sources



TECHNICAL CONSIDERATIONS

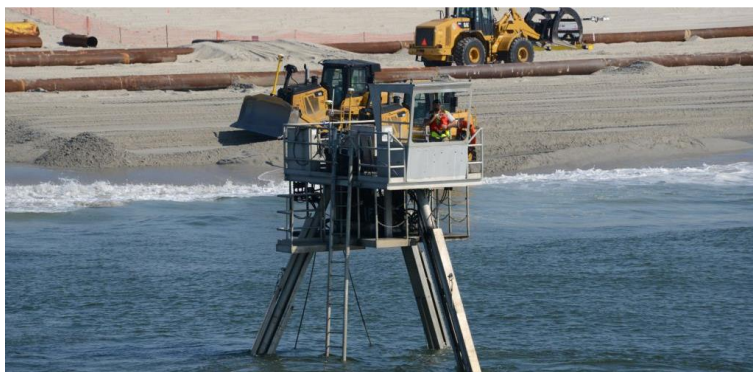
- Pipeline inventory & logistics
- Pipeline Routes
- Crossings – levees, utilities, highways, etc.
- Factors affecting operating efficiency





TECHNICAL CONSIDERATIONS

- UED
- % Fines Content
- Wear characteristics
- Suitability for restoration purpose
- Quality of insitu materials at restoration site
- Suitability of containment features
- Return water quality



TECHNICAL CONSIDERATIONS

- Equipment Selection & Configuration
 - Cutterheads
 - Dragheads
 - Impellers
 - Ladder Lengths and configuration
 - Spud Carriages or anchors
 - Anchor types
 - Land Equipment Spread





SANDY SPECIFICS

- Lessons Learned
- Sand Sources
- Design of Borrow and Fill



SANDY GENERAL

- Project Scheduling
- Environmental Windows
- Maintenance





FLORIDA SPECIFICS

- Lessons Learned
- Sand Sources
- Design of Borrow and Fill



FLORIDA GENERAL

- Project Scheduling
- Environmental Windows
- Maintenance





GREAT LAKES DREDGE & DOCK COMPANY, LLC

Bill Hanson — WHHanson@gldd.com

Steve Auernhamer — SRAuernhamer@gldd.com

